

## Improve Leachate Management to Drive Landfill Gas Capture

LoCI's Liquid Level Measurement improves gas collection through real-time, accurate measurement of leachate inside collection wells and wellbores. Liquid level trends and alerts enable proactive sub-surface management and pump maintenance to ensure sufficient leachate removal and perforated wellbore exposure.

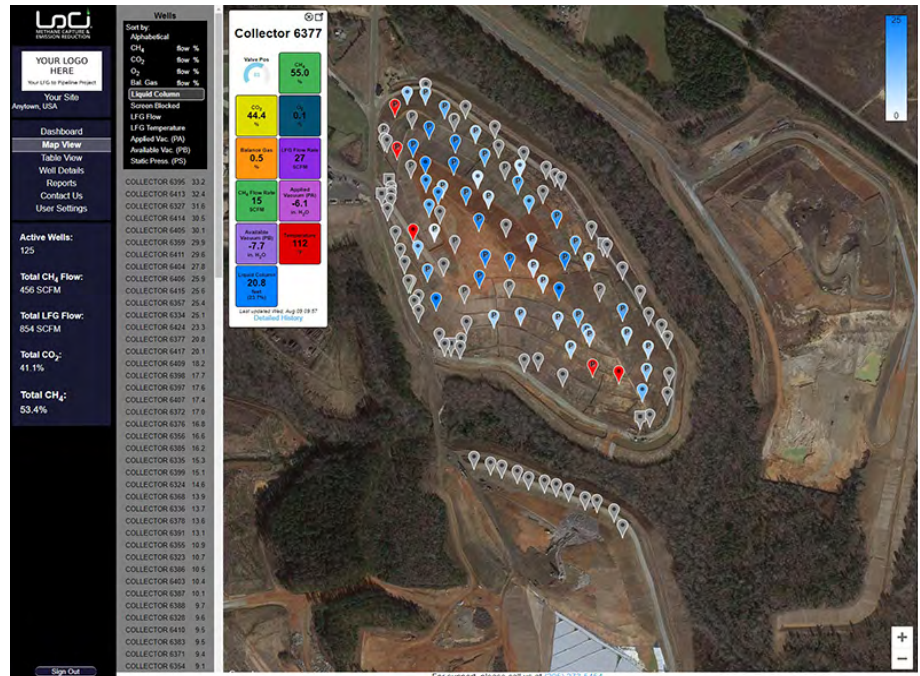
With Liquid Level Measurement, operators and owners can place and maintain infrastructure for the highest return on investment, putting a clear dollar value on pump placement and functionality.

### Features Include:

- Patented alerts via text or email to notify on-site personnel when liquid levels exceed thresholds, indicating the need for pump maintenance
- Ability to use standard pump-enabled well caps
- Data displayed in real-time and stored on WellWatcher® platform
  - Map and graphical timeline views available

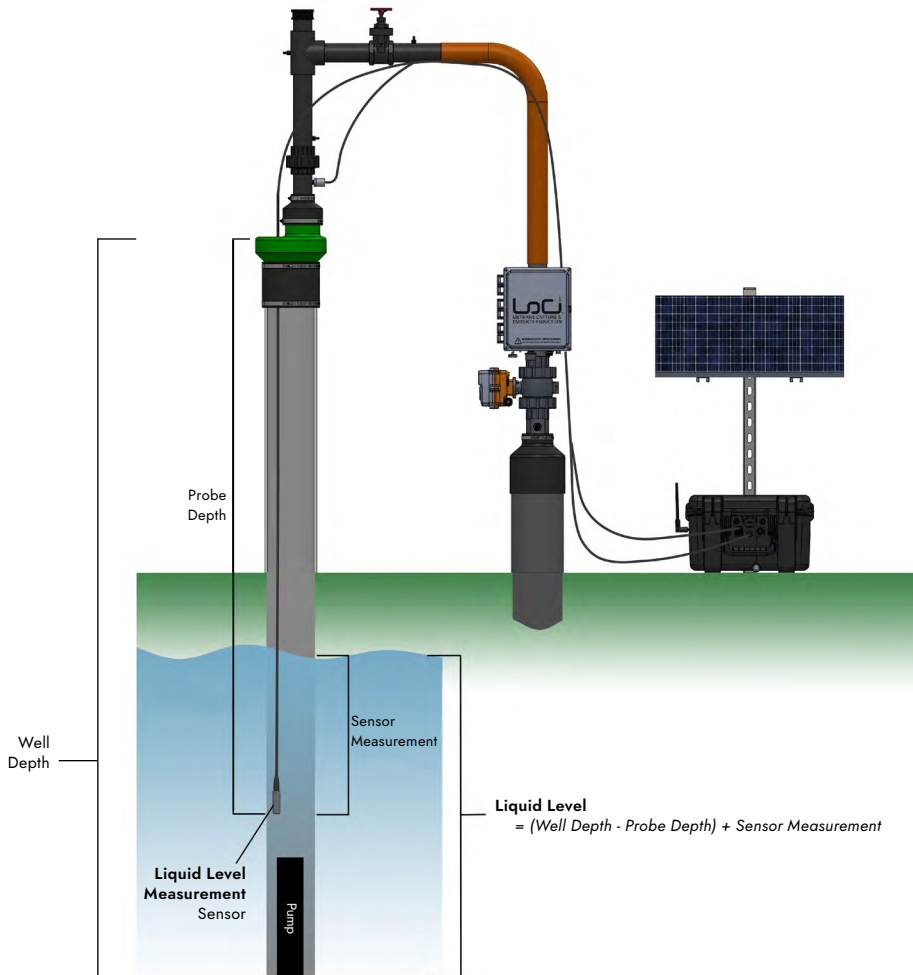
### LoCI's integrated device measures liquid levels within ±1 foot accuracy and can result in:

- Enhanced landfill gas operations, with fewer leachate problems
- Reduced field response times
- Increased efficiency for downhole pump maintenance
- Improved infrastructure planning and straightforward ROI on pump installations



Real-time data from LoCI's Liquid Level Measurement devices is available on the WellWatcher® platform and user interface.

## Measuring & Monitoring Liquid Levels:



To learn more and contact us, visit [locicontrols.com](http://locicontrols.com).



## Why LoCI Controls?

With financial, operational, and environmental, health, and safety (EHS) benefits, LoCI Controls' real-time data and control system optimizes facility management and gas collection for operators and landfill owners alike.

### Increase ROI

- Maximize methane flow
- Control nitrogen in the wellfield
- Automate well tuning strategy
- Improve collection system efficiency
- Increase plant uptime and productivity

### Empower On-Site Teams

- Troubleshoot wellfield and gas collection systems faster
- Reduce EHS risks

### Improve Relationships with Surrounding Communities

- Reduce potential odors and off-site gas migration

### Support Sustainability & Climate Action Goals

- Reduce greenhouse gas emissions