

Enables 24/7/365 Visibility Over Landfill Gas Collection Systems

LoCI Controls' cloud-based platform and user interface, WellWatcher[®] provides actionable real-time and historical data to manage wellfields and gas collection systems. With WellWatcher[®], customers can increase project efficiency and productivity while mitigating environmental, health, and safety risks across landfills.

Data, captured from LoCI's suite of measurement devices, is available on WellWatcher[®] in real time and includes:

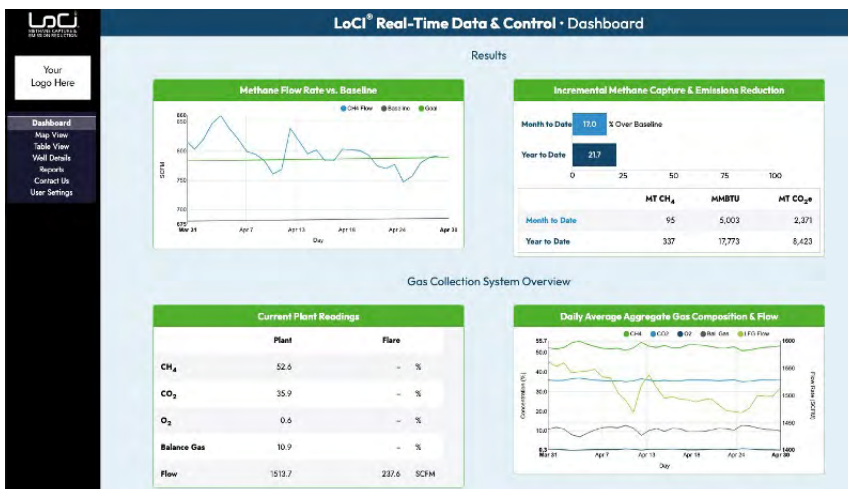
- Methane %
- Carbon dioxide %
- Oxygen %
- Balance gas %
- Flow
- Landfill gas temperature
- Applied and system pressures
- Barometric pressure
- Valve position
- Tuning
- Additional measurement capabilities:
 - Liquid levels
 - Static pressure
 - Aggregate plant flow and quality

Featuring a graphical user interface and real-time accessibility via desktop, laptop, or tablet, WellWatcher[®] allows for:

- Unprecedented landfill gas collection visibility
- Increased gas collection system efficiency and streamlined operations
- Improved safety across the wellfield and gas collection system

The platform includes a summary dashboard that highlights system performance and gas collection metrics in real time. Operators can leverage map or table views and export data for both individual wells and the wellfield in aggregate. **LoCI's Daily Action Report, available via WellWatcher[®], gives LoCI and landfill teams relevant data points and actionable steps to improve gas collection and mitigate any potential issues faster.**

Landfill operators and on-site teams can control their tuning strategy, change thresholds, and make valve adjustments directly from WellWatcher[®] — responding quickly to insights from the LoCI system. Operators have a window into a landfill's performance — both historical and current — and the ability to investigate trends via the *Well Details* or *Reports* pages.



The WellWatcher® platform and user interface provides real-time data and visibility across the landfill gas collection system.

Using WellWatcher®, individual collection wells can be automatically tuned based on gas composition parameters and established set points. Landfill-wide tuning algorithms use aggregate gas composition to optimize the entire collection system.

At renewable natural gas (RNG) projects, LoCI incorporates plant-level aggregate measurements of gas composition and flow using a gas chromatograph or other high-precision plant equipment, which serve as the basis for LoCI's patented batch valve adjustments in the wellfield. With this method, LoCI can control gas composition and flow to optimize overall RNG project performance, maximizing methane flow and the project's ROI.

WellWatcher® and all landfill gas collection system data is secured using TLS encryption and certificate-based host authentication. Account credentials are encrypted both in transit and on LoCI's servers, hosted at Amazon Web Services, an ISO 27001-certified cloud provider. All hardware communicates with LoCI's servers via an on-demand cellular private IP data service.

To learn more and contact us, visit locicontrols.com.



Why LoCI Controls?

With financial, operational, and environmental, health, and safety (EHS) benefits, LoCI Controls' real-time data and control system optimizes facility management and gas collection for operators and landfill owners alike.

Increase ROI

- Maximize methane flow
- Control nitrogen in the wellfield
- Automate well tuning
- Improve collection system efficiency
- Increase plant uptime and productivity

Empower On-Site Teams

- Troubleshoot wellfield and gas collection systems faster
- Reduce EHS risks

Improve Relationships with Surrounding Communities

- Reduce potential odors and off-site gas migration

Support Sustainability & Climate Action Goals

- Reduce greenhouse gas emissions