



TECH NOTE

CLOUD-BASED WELLWATCHER 2.0® PLATFORM OFFERS 24/7/365 VISIBILITY ON LANDFILL GAS COLLECTION SYSTEMS

WellWatcher 2.0®

WellWatcher 2.0 from Loci Controls provides 24/7/365 visibility into Loci's automated landfill gas collection product and service offering, increasing gas collection system efficiency, increasing productivity, and reducing environment, health and safety risks. WellWatcher is a cloud-based user interface and analytics platform designed specifically for landfill owners or landfill gas power plant operators.

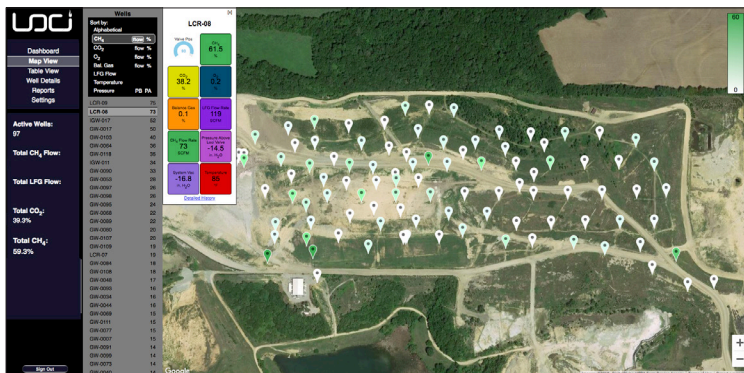
Featuring a graphical user interface that allows real-time accessibility via desktop, laptop, or tablet, WellWatcher offers unprecedented landfill gas collection visibility, improved safety, boosted performance, and streamlined operation of the landfill gas collection system. WellWatcher includes a performance dashboard that highlights, in real-time, gas collection system Key Performance Indicators (KPI's). In addition, operators can use a map view or table view with exportable data in csv format for both individual wells and aggregate wellfield data. A monthly gas collection system report is also included.

Loci Controls' proprietary control algorithms allows for the automated, remote operation of a landfill gas collection system. Loci's automation includes algorithms to fine tune individual collection wells based on gas composition and customer established set points, and also uses aggregate gas composition for the entire collection system. For a LFG to high BTU project, Loci incorporates real-time, plant level aggregate measurements on gas composition and flow using a gas chromatograph or other high-precision plant equipment. This data is the basis for batch valve adjustments made by Loci's algorithm in the wellfield. Using this method, Loci can control O₂ and N₂ to the parts per million levels in the aggregate gas composition, while maximizing CH₄ flow and project revenue.

WellWatcher 2.0 and all landfill gas collection system data is secured using TLS encryption and certificate-based host authentication. Account credentials are encrypted both in transit and on our servers. All Loci Controls' hardware communicates with our servers via an on-demand cellular private IP data service. Loci Controls' servers are hosted at Amazon Web Services, an ISO-27001-certified cloud provider.

WELLWATCHER® 2.0 PLATFORM

Our cloud-based analytics platform is accessible 24/7/365 by desktop, laptop, or tablet. Loci WellWatcher user interface allows for remote monitoring and control, and provides users with a performance dashboard, map view and table view interfaces, as well as real-time reporting - all designed to help operators increase gas collection system efficiency, improve profitability of LFG to Energy projects.



WHY LOCI CONTROLS?

With financial, operational, environmental, health, and safety benefits, Loci Controls' products and services help optimize facility management and gas collection for operators and landfill owners alike.



INCREASE REVENUE

- Maximize methane flow
- Control N₂ in the wellfield
- Automated valve adjustments
- Better collection system efficiency
- Reduce plant downtime



INCREASE PRODUCTIVITY

- For both plant and employees
- Lower labor costs for wellfield tuning and O&M
- Reduce plant maintenance costs



REDUCE ENVIRONMENT HEALTH & SAFETY RISKS

- Reduce man hours spent in wellfield
- Reduce fugitive gas emissions
- Reduce odors

